

\* **Copyright· No reprint·Multi Currency Detector series**

- \* The copyrights of all components of this product, including parts belong to the product manufacturer. Without the permission of the manufacturer, the reproduction of imitation, copy, transcription or translation cannot be done. This user's manual does not have any kinds of guarantee, expression of position or other implications. The product manufacturer and its employees are not responsible for any direct or indirect information lose, profit lose or termination of business due to the use of this user's manual or the use of information of other products mentioned in this user's manual. Other than that, the products, size and version mentioned in this user's manual are for reference only. The content will also be updated continuous, and the updates will not be notified in other means. The name and version of the product will be printed at the bottom of the machine. The machine software of the same products with different production dates will be updated continuously. Please visit the company website or contact the product manufacturer or the distributor for detailed updates.
- \* The final right of explanation of this product belongs to "the product manufacturer".
- \*

## Safety Notice

### **Safety in the Electric Aspect:**

- To avoid serious damages caused by electric shocks and short circuits and misreading of the machine, please avoid any shocks to the machine or the external power plugs when transporting the machine. Please plug the external power plug into the machine first, and then plug it to the 220V outlet plug. Please turn off the machine and unplug the external power plug when not using.
- Please make sure that the voltage of the power supply unit is set within the voltage limit of your country/region.
- When damages occur to the power supply unit or the external power plug, please do not repair it yourself. Please look for professionals or the manufacturer to repair it to avoid electric shocks. When repairing, disturbance caused by the power supply unit and the power plug to earth connection of return circuits should be avoided.

**Safety in the Operation Aspect:**

Before use, please make sure that all wires are connected properly. If you encounter any major problems, please contact the manufacturer or the distributor immediately.

Use this machine away from vibrating areas, or avoid any vibrations around this machine.

**Content**

**1. Overview of Product..... 3**

**2. Graphic Presentation of the Product..... 3**

# Multi-Currency Detector and Serial Number Printing Machine User's Manual

<b><u>3. Explanation of Diagram</u></b> .....	5
<b><u>4. Currency Types</u></b> .....	5
<b><u>5. Correct ways to Feed Currencies</u></b> .....	5

<b><u>6. Commonly Seen Incorrect Ways of Feeding Currencies</u></b> .....	5
<b><u>7. Self-examination Process</u></b> .....	5
<b><u>8. Mixed-examination Process</u></b> .....	5
<b><u>9. Function Menu — “scanning”</u></b> .....	5

# Multi-Currency Detector and Serial Number Printing Machine User's Manual

# Multi-Currency Detector and Serial Number Printing Machine User's Manual

## Multi-Currency Detector and Serial Number Printing Machine User's Manual



# Multi-Currency Detector and Serial Number Printing Machine User's Manual

## Multi-Currency Detector and Serial Number Printing Machine User's Manual

## Multi-Currency Detector and Serial Number Printing Machine User's Manual

## Multi-Currency Detector and Serial Number Printing Machine User's Manual



## Multi-Currency Detector and Serial Number Printing Machine User's Manual



## Multi-Currency Detector and Serial Number Printing Machine User's Manual



## Multi-Currency Detector and Serial Number Printing Machine User's Manual

<b><u>10. Installation of Paper Tray</u></b> .....	18
<b><u>11. Emergency Measures</u></b> .....	18
<b><u>12. Technical Indicators</u></b> .....	18
<b><u>13. Frequent Problems and Solutions</u></b> .....	18
<b><u>14. Display of Warning Codes</u></b> .....	18
<b><u>15. S/N management system</u></b> .....	18

## Multi-Currency Detector and Serial Number Printing Machine User's Manual

## Multi-Currency Detector and Serial Number Printing Machine User's Manual

## Multi-Currency Detector and Serial Number Printing Machine User's Manual

## Multi-Currency Detector and Serial Number Printing Machine User's Manual



## Multi-Currency Detector and Serial Number Printing Machine User's Manual





## Multi-Currency Detector and Serial Number Printing Machine User's Manual



## **1. Overview of Product**







## Multi-Currency Detector and Serial Number Printing Machine User's Manual











# Multi-Currency Detector and Serial Number Printing Machine User's Manual



## Multi-Currency Detector and Serial Number Printing Machine User's Manual

## Multi-Currency Detector and Serial Number Printing Machine User's Manual



## Multi-Currency Detector and Serial Number Printing Machine User's Manual

## Multi-Currency Detector and Serial Number Printing Machine User's Manual



## Multi-Currency Detector and Serial Number Printing Machine User's Manual

## Multi-Currency Detector and Serial Number Printing Machine User's Manual

## Multi-Currency Detector and Serial Number Printing Machine User's Manual

## Multi-Currency Detector and Serial Number Printing Machine User's Manual





## Multi-Currency Detector and Serial Number Printing Machine User's Manual



## Multi-Currency Detector and Serial Number Printing Machine User's Manual

## Multi-Currency Detector and Serial Number Printing Machine User's Manual



## Multi-Currency Detector and Serial Number Printing Machine User's Manual



## Multi-Currency Detector and Serial Number Printing Machine User's Manual



## Multi-Currency Detector and Serial Number Printing Machine User's Manual



## Multi-Currency Detector and Serial Number Printing Machine User's Manual

## Multi-Currency Detector and Serial Number Printing Machine User's Manual

## Multi-Currency Detector and Serial Number Printing Machine User's Manual

## Multi-Currency Detector and Serial Number Printing Machine User's Manual



## Multi-Currency Detector and Serial Number Printing Machine User's Manual





## Multi-Currency Detector and Serial Number Printing Machine User's Manual

## Multi-Currency Detector and Serial Number Printing Machine User's Manual





## Multi-Currency Detector and Serial Number Printing Machine User's Manual



## Multi-Currency Detector and Serial Number Printing Machine User's Manual









## Multi-Currency Detector and Serial Number Printing Machine User's Manual





## Multi-Currency Detector and Serial Number Printing Machine User's Manual

## Multi-Currency Detector and Serial Number Printing Machine User's Manual



## Multi-Currency Detector and Serial Number Printing Machine User's Manual

## Multi-Currency Detector and Serial Number Printing Machine User's Manual



## Multi-Currency Detector and Serial Number Printing Machine User's Manual



## Multi-Currency Detector and Serial Number Printing Machine User's Manual

## Multi-Currency Detector and Serial Number Printing Machine User's Manual

## Multi-Currency Detector and Serial Number Printing Machine User's Manual





## Multi-Currency Detector and Serial Number Printing Machine User's Manual

## Multi-Currency Detector and Serial Number Printing Machine User's Manual

### **3. Explanation of Diagram**



- “MODE” key: function display and adjustment key, press this key and all functions will be displayed one by one.
- “SELECT” key: this key is used to adjust and choose functions, money detecting mode, and checking money detecting results.
- “ENTER” key: execution key for functions and money detecting results.
- Time Display: Year-Month-Date-Hour-Minute.
- Money-detecting mode: mixed examination-means that this mode is automatic examination. Mixed examination for more than 2 currencies.

## Multi-Currency Detector and Serial Number Printing Machine User's Manual

## Multi-Currency Detector and Serial Number Printing Machine User's Manual

## Multi-Currency Detector and Serial Number Printing Machine User's Manual

## Multi-Currency Detector and Serial Number Printing Machine User's Manual



## Multi-Currency Detector and Serial Number Printing Machine User's Manual



- screen.
- s
- ing tray
- e
- 5. Printing paper tray
- 6. Power switch
- 7. Data port (USB232)
- 8. Power plug
-

## Multi-Currency Detector and Serial Number Printing Machine User's Manual



- Electric wire 90-220V electricity input.
- Power light.
- 12V DC output wire.

Multi-Currency Detector and Serial Nu

ial



## Multi-Currency Detector and Serial Number Printing Machine User's Manual







## Multi-Currency Detector and Serial Number Printing Machine User's Manual



## Multi-Currency Detector and Serial Number Printing Machine User's Manual









































## **6. Commonly Seen Incorrect Ways of Feeding Currencies**

## Multi-Currency Detector and Serial Number Printing Machine User's Manual







N  
o  
t  
e  
:  
  
d  
u  
r  
i  
n

g

t  
h  
e

p  
r  
o  
c  
e  
s  
s

o  
f

s  
y  
s  
t  
e  
m

s  
e  
l  
f  
-  
e  
x  
a  
m

i  
n  
a  
t  
i  
o  
n  
,  
i  
f  
t  
h  
e  
m  
a  
c  
h  
i  
n  
e  
c  
o  
n  
t  
a  
i  
n  
s

p  
a  
p  
e  
r  
  
o  
r  
  
o  
t  
h  
e  
r  
  
o  
b  
j  
e  
c  
t  
s  
,  
  
t  
h  
e  
  
m  
a  
c  
h  
i

n  
e

w  
i  
l  
l

r  
e  
j  
e  
c  
t

s  
u  
c  
h

t  
h  
i  
n  
g  
s

a  
u  
t  
o  
m  
a

t  
i  
c  
a  
l  
l  
y

t  
o

a  
v  
o  
i  
d

p  
r  
o  
b  
l  
e  
m  
s

d  
u  
r  
i  
n  
g

s  
e  
l  
f  
-  
e  
x  
a  
m  
i  
n  
a  
t  
i  
o  
n  
.

**8.1** After US dollar examining, press the key ENTER to finish the process and show the examined result. And you can presee the key SELECT to choose other paper money examined result.

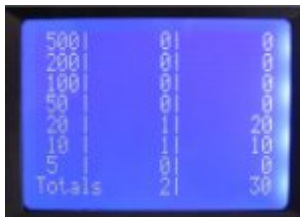


# Wrong Way Wrong direction

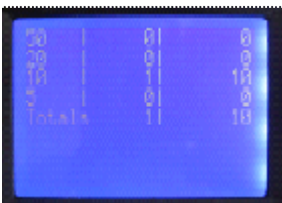
## Multi-Currency Detector and Serial Number Pri



8.2 After euro examining, press the key ENTER to finish the process and show the examined result. And you can presee the key SELECT to choose other paper money examined result.



8.3 After pound examining, press the key ENTER to finish the process and show the examined result. And you can presee the key SELECT to choose other paper money examined result.



When the machine is turned on, the screen displays "Unixcam110".

This is power self-examination process.

After 2 seconds, it is the self-examination process of system sensor and currency data bank.

1 second later, the machines automatically enters the "ALL" mode for money detecting.

The system self-examination process is completed.



## **9. Function Menu — “scanning”**



Graph 1: this is the "turn on" option to choose "CCD" scanning and number printing. Press "enter" key to execute this option.

Graph 2: this is the "turn off" option to unselect "CCD" scanning and number printing. Press "enter" key to execute.



## **Graph1      Graph2      Graph3**

Graph 1: This option means that when detecting money, the printing of numbers is continuous with serial numbers. Press "enter" key to execute.

G  
r  
a  
p  
h

2

:

T  
h  
i  
s

o

p  
t  
i  
o  
n  
  
t  
u  
r  
n  
s  
  
o  
n  
  
t  
h  
e  
  
c  
o  
m  
p  
r  
e  
h  
e  
n  
s  
i  
v  
e

p  
r  
i  
n  
t  
i  
n  
g

m  
o  
d  
e  
,

p  
r  
e  
s  
s

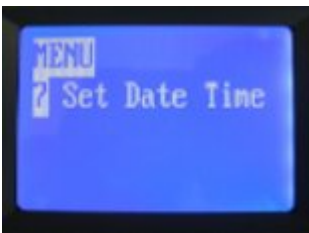
“  
e  
n  
t  
e  
r  
”

k  
e  
y



t  
o  
  
e  
x  
e  
c  
u  
t  
e  
.

Graph 3: This display shows the turning off of printing, press “enter” key to execute.





r  
a  
p  
h  
1

G  
r  
a  
p  
h  
2

Graph 1 first, press mode key several times to enter the main menu "7 Set Date Time", press enter key to choose the option to set the time.

Graph 2 the first choice sets the "year", use "select" key to choose the current year, and press mode key for the next option.



Graph 3 Press "mode key" to set "month", use select key to choose the current month as the above graph shows.

Graph 4 Press "mode key" to set date, use "select key" to adjust the current date.



















































G  
r

a  
p  
h  
1

G  
r  
a  
p  
h  
2

G  
r  
a  
p  
h  
3





















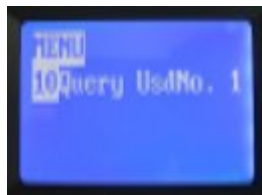












Step: 1 First, press mode key to find “9 Query USD NO 1”, and press enter key to enter the “waiting” interface shown in graph 3.

Multi-Currency Detector and Serial Number Printing Machine User's Manual



# Graph 1

Multi-Currency Detector and Serial Number Printing Machine User's Manual

# Graph 2

























## Multi-Currency Detector and Serial Number Printing Machine User's Manual





## Multi-Currency Detector and Serial Number Printing Machine User's Manual













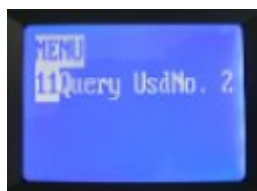


# Graph 1

错误!

Multi-Currency Detecto

Printer Machine User's Manual

































## Multi-Currency Detector and Serial Number Printing Machine User's Manual

After entering the “USD  
serial number” interface,  
press this key to move

ing Machine User’s Manual

After entering the USD  
serial number that you  
are looking for, press  
“enter” key to execute.



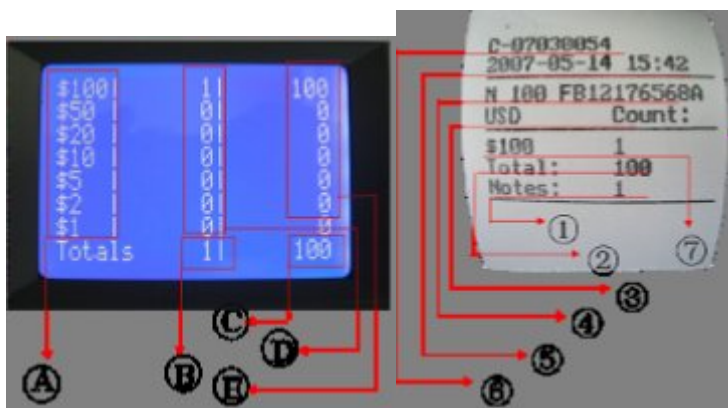
The number of USD currencies went through.  
The version number and face value of USD currency.  
Time display: year, month, date, hour, minute  
Display of the serial number of query

letters and numbers.





































## Multi-Currency Detector and Serial Number Printing Machine User's Manual

## Multi-Currency Detector and Serial Number Printing Machine User's Manual

## Multi-Currency Detector and Serial Number Printing Machine User's Manual

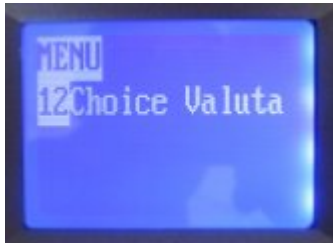












This option is used to setup the counterfeit face value, and this option is currently unavailable.

























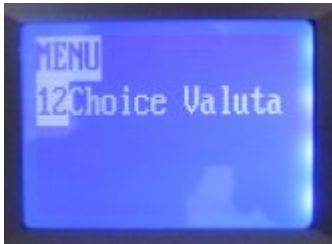












This option is used to setup the counterfeit face value, and this option is currently unavailable.

















## Multi-Currency Detector and Serial Number Printing Machine User's Manual













## **10. Installation of Paper Tray**





















Note: When your machine starts to misreport a large amount of genuine money, please use this option and contact us for passwords. Do not use this option without authorization, otherwise bear the responsibilities of any loss.









































































## Multi-Currency Detector and Serial Number Printing Machine User's Manual

## Multi-Currency Detector and Serial Number Printing Machine User's Manual

## Multi-Currency Detector and Serial Number Printing Machine User's Manual

## Multi-Currency Detector and Serial Number Printing Machine User's Manual





































Multi-Currency Detector and Serial Number Printing Machine User's Manual

			F



## Multi-Currency Detector and Serial Number Printing Machine User's Manual

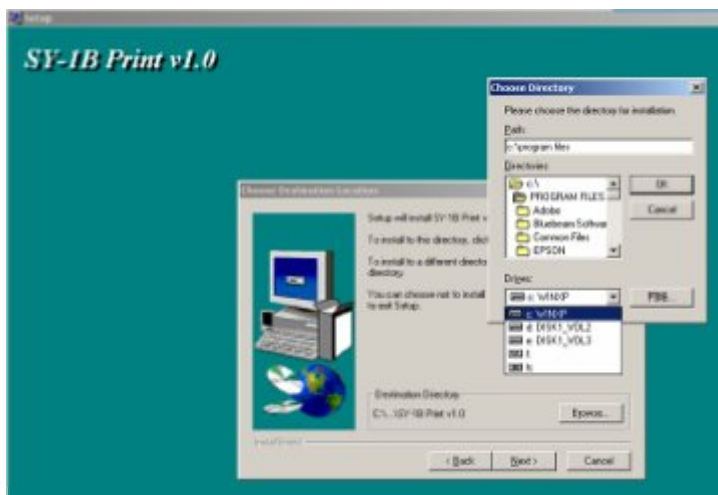
## Multi-Currency Detector and Serial Number Printing Machine User's Manual

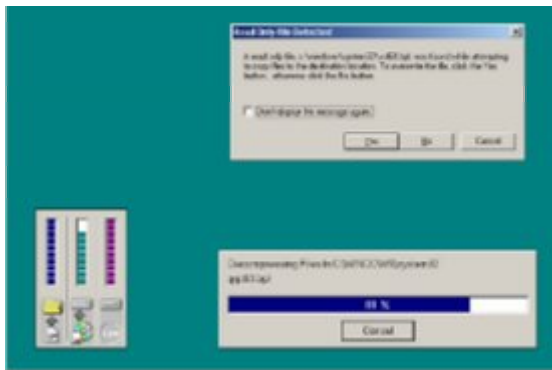












### 15.3 Procedure start





## **15.4 System recognise**

## **15.6 System operation---database management**

## **15.7 Currency setup**



## **15.9 Setup mixed value**





## **15.11 Delet records**



